

# LED LIGHTPACK - LPL

The LED lightpack is an energy saving lighting concept, which can be fitted with a variety of sensors for further savings. Fitted with SELV: Safe Extra Low Voltage for your safety. With easy to detach end caps and diffuser for easy installation.

## FEATURES

- Manufactured from mild steel
- Specially designed acrylic diffuser
- Constant output driver
- Range of outputs and sizes



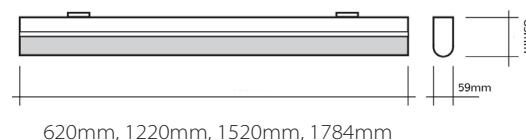
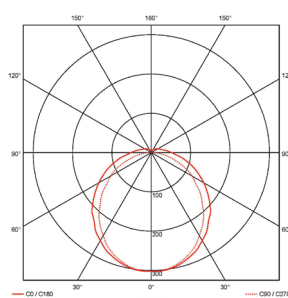
## TECHNICAL DETAILS

Part Number	Description	Replaces	Weight (kg)	No. Per 10A Breaker	Inrush Current (A)	Circuit Watts (W)	Board Lumens	Luminaire Lumens	LI/cw
LPL-2-CO-4K	2FT Single LPL Lightpack	1 x 18W T8	1.1	25	12.5A 180µs	8	1410	1015	126.9
LPL-4-CO-4K	4FT Single LPL Lightpack	1 X 36W T8	1.9	25	12.5A 180µs	19	3348	2411	126.9
LPL-5-CO-4K	5FT Single LPL Lightpack	1 X 58W T8	2.5	25	12.5A 180µs	23	4053	2918	126.9
LPL-6-CO-4K	6FT Single LPL Lightpack	1 X 70W T8	2.9	25	12.5A 180µs	24	4268	3073	128.1
LPL-2T-CO-4K	2FT Twin LPL Lightpack	2 x 18W T8	1.1	25	12.5A 180µs	23	4053	2918	126.9
LPL-4T-CO-4K	4FT Twin LPL Lightpack	2 X 36W T8	2.0	25	12.5A 180µs	41	7225	5202	126.9
LPL-5T-CO-4K	5FT Twin LPL Lightpack	2 X 58W T8	2.4	25	12.5A 180µs	47	8282	5963	126.9
LPL-6T-CO-4K	6FT Twin LPL Lightpack	2 X 70W T8	3.0	25	15A 180µs	70	12335	8881	126.9

## OPTIONS AND ACCESSORIES

- EM** Integral Emergency (1W)
- EMST** Integral Emergency Self Test (1W)
- CF** Corridor Function
- DD** SwitchDIM/DALI
- MWP** Remote Programmable Microwave
- BK** Black
- SI** Silver
- 3K** 3000K Colour Temperature
- 5K** 5000K Colour Temperature
- 65K** 6500K Colour Temperature

## PHOTOMETRIC AND DIMENSION



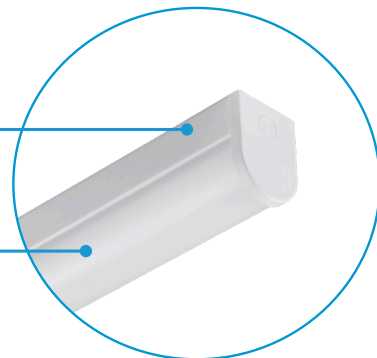
# LED LIGHTPACK - CLP/LPL

CENTRAL CABLE ENTRY



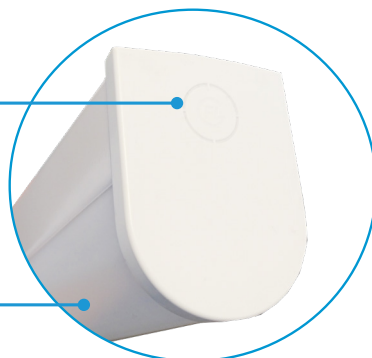
STEEL ROLL FORMED BODY & LID

WIDE DIFFUSER FOR EVEN LIGHT DISTRIBUTION



CONDUIT ENTRY IN END CAPS

LED OPTIMISED DIFFUSER



CONNECTOR TO GEAR TRAY

STANDOFFS ON REAR OF FITTING



PUSH WIRE TERMINAL BLOCK EASES INSTALLATION

CLIP ON LID SYSTEM

