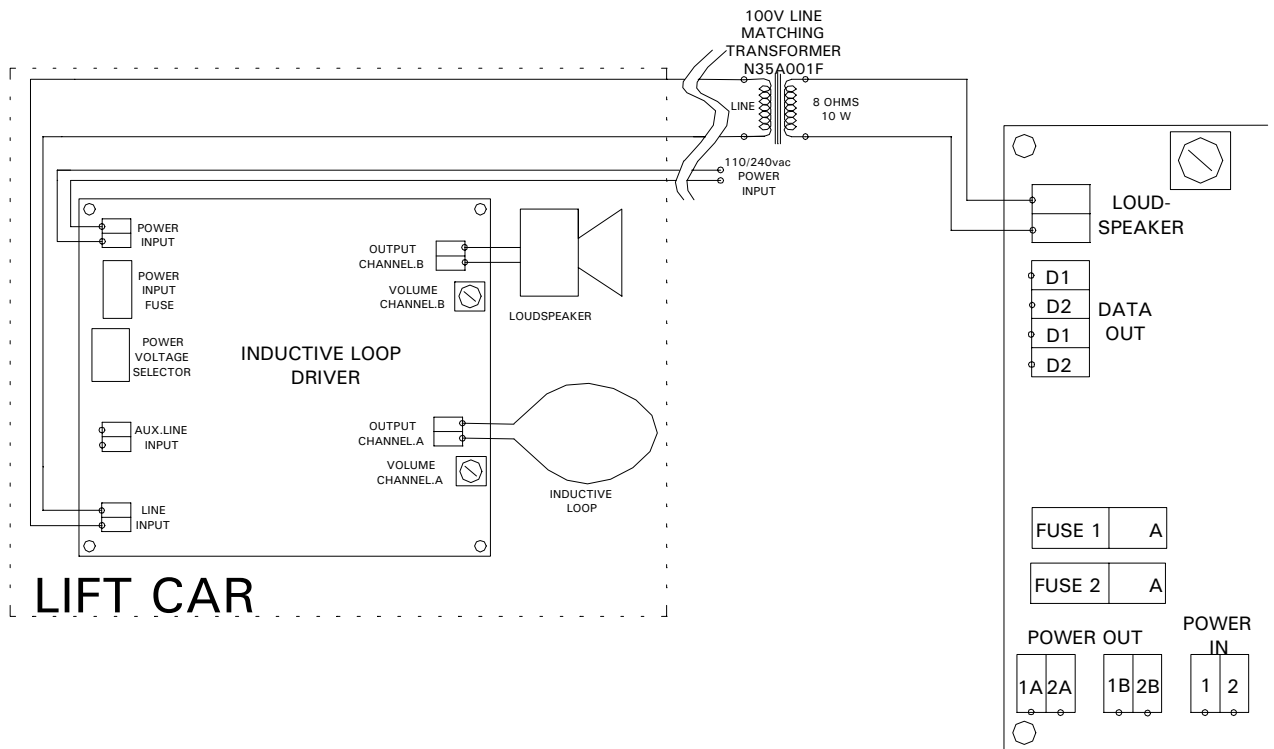


INDUCTIVE LOOP DRIVER



Description

Our inductive loop driver receives 100v line amplified voice signals, generated by our voice unit, and plays the sound back through two separate channels; one for a loudspeaker and one for an inductive loop.

Both voice output channels are independently volume controllable allowing the installer to select larger amounts of power output (up to 6W) for the inductive loop whilst trimming the loudspeaker output to acceptable levels.

The standard wire loop supplied with the unit must be mounted around the perimeter of the lift car; ideally, either in the ceiling or in the floor of the lift. The loop generates an electric field that can be obscured by large amount of steel, so care must be taken when locating the loop.

Standard Features

Single input channel, two output channels (independently controllable)
 Selectable power supply voltage (240vac or 110vac – fused on PCB)
 Maximum 6W audio output power

Electrical Detail

Continuous power supply: 240vac or 110vac selectable
 Max. Power supply consumption: 12W

General

Unit supplied mounted in a steel enclosure with a loose wire loop and line transformer for speech unit output conversion.

Optional Items

PCB mounted loop for proximity loop applications
Emergency telephone & voice unit compatible driver
 Auxiliary input channel (for other audio source input)
 24v dc power supply option
 Inductive loop identifier engraved faceplate