

Elevator Equipment Limited

Unit 11-13 Parker Drive, Leicester, LE4 0JP

Tel: **0116 2662241**

Fax: **0116 2662242**

E-Mail: sales@elevatorequipment.co.uk

Website: www.elevatorequipment.co.uk

MagLock

Lift Car Gate Locking System.

Our MagLock System has been designed to replace Matthew Catches to prevent any unwanted car door movement in mid travel.



Registered in England No. 4398327
Director: M Spencer C Moore

Unit 11-13 Parker Drive, Leicester, LE4 0JP

Tel: **0116 2662241**

Fax: **0116 2662242**

E-Mail: sales@elevatorequipment.co.uk

Website: www.elevatorequipment.co.uk

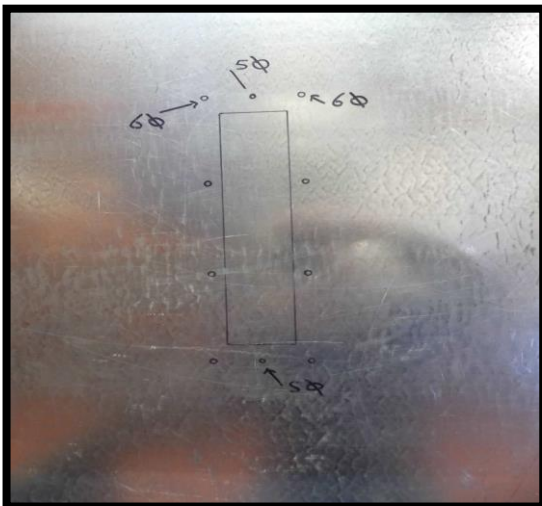
MagLock Installation Manual.



Firstly, determine the best position for the installation of the MagLock between the car door and lift car wall.



Disassemble template from Maglock assembly first. Hold the support template onto the car wall and mark out the drill holes and hole cut out



Drill all 8 holes 6mm and the two centre holes 5mm.



Countersink the top and bottom centre holes and cut out the centre slot.



Unit 11-13 Parker Drive, Leicester, LE4 0JP

Tel: **0116 2662241**

Fax: **0116 2662242**

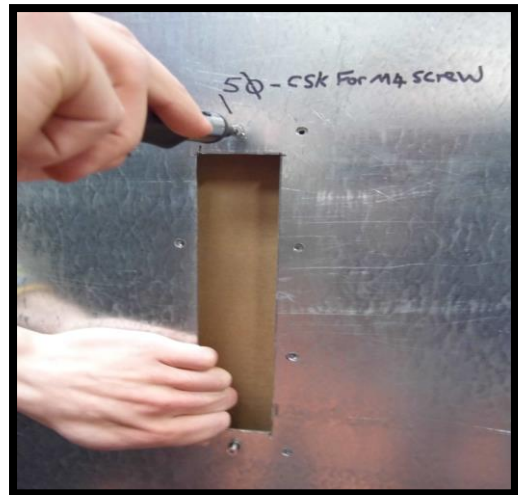
E-Mail: sales@elevatorequipment.co.uk

Website: www.elevatorequipment.co.uk

MagLock Installation Manual.



Position the template through the cut out.



Fix the backing plate via the top and bottom countersink holes. **Use Lock Thread on all fixings**



Now install the MagLock as shown. **Use Lock Thread on all fixings.**



MagLock is now completed.



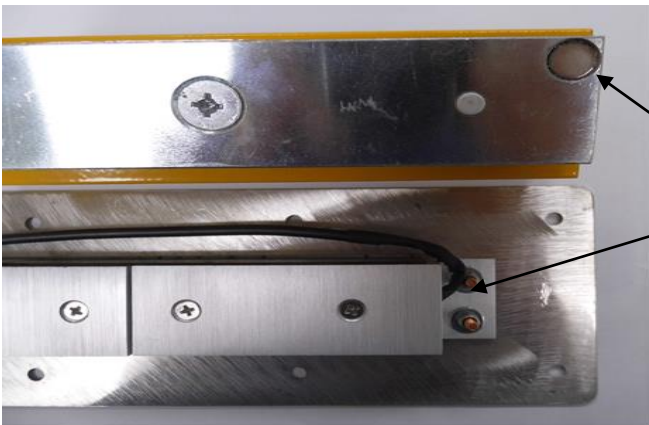
MagLock Installation Manual.



Position the Lock plate to the leading edge of the car shutter gate



The position should be in line with the MagLock. Fix the Locking plate to the leading edge. 10mm packer provided if needed. **Use Lock Thread on all fixings.**



NOTE – Ensure the Magnet is towards the edge with the wiring

When installation is complete, please make sure the lift car door and tracks are clear and work correctly. The MagLock **MUST** be no more than **3mm** from the Lock Plate When the door is closed.

Please ensure that you inform ALL operatives to close the lift car door slowly at all times ensuring that the car door is fully closed so the Maglock can works correctly. !!!!



Unit 11-13 Parker Drive, Leicester, LE4 0JP

Tel: **0116 2662241**

Fax: **0116 2662242**

E-Mail: sales@elevatorequipment.co.uk

Website: www.elevatorequipment.co.uk

MagLock Interface Installation Manual.

IMPORTANT: This unit must be installed by a competent person only.

Warning: Isolate Supply Before Opening Cover

Safety Warning

These warnings are provided in the interest of safety. You must read them carefully before or using this equipment

- All installation and servicing must be done by a qualified competent person.
- It is dangerous to alter specification or modify the product in any way.
- Ensure that these instructions are passed on to the end user and lift control drawings are modified as necessary.
- Do not attach to any surface which is freshly painted, damp, or otherwise electrically conductive.

ATTENTION: Fit the correct relay according to the ramp voltage.

100VDC – 125VDC Ramp Supply Fit Relay 110VDC Only

180VDC – 240VDC Ramp Supply Fit Relay 220VDC Only



MagLock Interface Installation Manual.

Before you commence your installation, please make sure the correct relay has been fitted and the trip switch within the control unit is off!!!!!!

Firstly, find a suitable position to install the interface unit on top of the lift car top.

Connect the 12VDC **MagLock** Lead – **W2** to the MagLock.

Cable Number (1) 12VDC + - MagLock Red/Black Together.

Cable Number (2) 12VDC _ - MagLock Blue/Yellow Together.

Optional: Connect in Series with Car Gate Contact S1 and S2 within the control unit box. Cable Number (3) – NO – MagLock Green Cable, Cable Number (4) – COM – MagLock Orange Cable to give controller feedback when the car gate is shut and the Maglock is activated.

Connect the **Ramp** signal lead – **W3** to the existing Retiring Cam Unit. **Please make sure you connect the lead to the correct polarity**

Connect the power lead to **230VAC – W1**

How to test the Maglock.

Switch on the Interface unit via the trip switch.

Make sure the car door is full closed.

Press and hold the green button on the relay.

The car door will now be locked.

Now put the lift back into service and check to see if the car door is locked during travel and unlocks when the lifts at floor level.

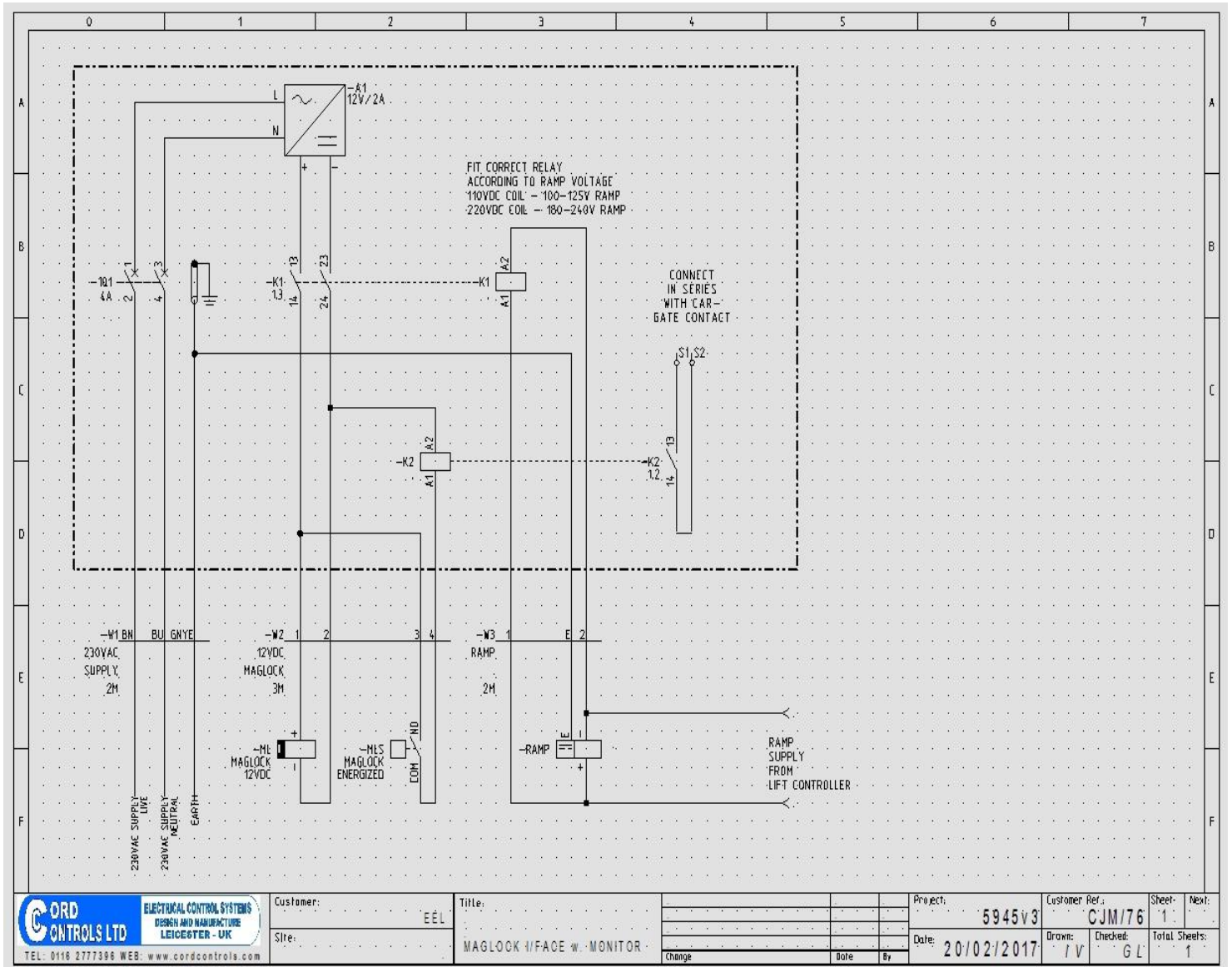
If the car door opens in travel, check your wiring to the Ramp that the polarity is connected correctly.



Elevator Equipment Limited

Unit 11-13 Parker Drive, Leicester, LE4 0JP
 Tel: **0116 2662241**
 Fax: **0116 2662242**
 E-Mail: sales@elevatorequipment.co.uk
 Website: www.elevatorequipment.co.uk

MagLock Interface Installation Manual.



CORD CONTROLS LTD
 ELECTRICAL CONTROL SYSTEMS
 DESIGN AND MANUFACTURE
 LEICESTER - UK
 TEL: 0116 277396 WEB: www.cordcontrols.com

Customer:	EEL	Title:	MAGLOCK I/FACE w. MONITOR
Site:			

Project:	5945V3	Customer Ref.:	CJM/76	Sheet:	1	Next:	
Date:	20/02/2017	Drawn:	IV	Checked:	GL	Total Sheets:	1
Change		Date		By			

