



# TYPE EXAMINATION CERTIFICATE

According to Lifts Regulations 2016, Schedule 11, Section A

<b>Certificate No.:</b>	UK-B 141
<b>Approved Body:</b>	TUV SUD B A B T UNLIMITED Octagon House Concorde Way, Segensworth North Fareham, Hampshire, PO15 5RL, UK Identification No. 0168
<b>Certificate Holder:</b>	ACLA-WERKE GMBH Frankfurter Str. 142-190 51065 Köln - Germany
<b>Manufacturer of the Test Sample:</b> <small>(Manufacturer of Serial Production - see Enclosure)</small>	ACLA-WERKE GMBH Frankfurter Str. 142-190 51065 Köln - Germany
<b>Product:</b>	Energy accumulation buffer with nonlinear characteristics
<b>Type:</b>	300405A
<b>Regulation:</b>	Lifts Regulations 2016
<b>Reference Standards:</b>	EN 81-20:2020 EN 81-50:2020
<b>Test report:</b>	UK-B 137-153 dated 2022-01-24
<b>Outcome:</b>	The product conforms to the essential health and safety requirements of the mentioned Regulation if the requirements of the annex to this type examination certificate are kept.
<b>Date of Issue:</b>	2022-02-21

  
 Bernd Gründling  
 TUV SUD B A B T UNLIMITED





## 1 Scope of application

- 1.1 Permissible total mass of car and rated load or counterweight by using one buffer depending on the maximum rated speeds:

Rated speed [m/s]	Min. total mass [kg]	Max. total mass [kg]
1.00	300	1600

(If several buffers are used, the permissible total mass can be multiplied accordingly.)

- 1.2 Further technical data / information

Maximum impact speed	1.15 m/s
Dimension	Ø 101 mm x 163 mm
Material	AUTAN® HE
Connecting elements / fixing elements / marking	see clause 2.2

- 1.3 Environmental conditions

Temperature	-15 °C to +60 °C
Humidity	max. 98 % at room temperature, non-condensing
Pollution	no exposure to acids, bases, solvents

## 2 Conditions

- 2.1 By using more than one buffer these safety devices must be identical in design, execution and installation position.
- 2.2 The manufacturer's operating instructions must be observed in particular with regard to inspection, replacement criteria and fixing.
- 2.3 The approval drawing No. Z30012 including stamp from 2022-01-24 shall be included to the type examination for the identification and information of the general design and operation and distinctness of the approved type.
- 2.4 The type examination certificate may only be used in combination with the corresponding annex and enclosure (List of authorized manufacturers of the serial production). The enclosure will be updated immediately after any change by the certification holder.

**Annex to the Type Examination Certificate  
No. UK-B 141 of 2022-02-21**



**3 Remarks**

3.1 The testing of other requirements of the standard, wear-related reduction of the buffer forces, as well as permanent influence of the ambient conditions are not part of this type examination.

3.2 This type examination certificate has been issued on basis of the following standards:

- EN 81-20:2014 (D), clause 5.8.1.7
- EN 81-20:2020 (D), clause 5.8.1.7
- EN 81-50:2014 (D), clause 5.5
- EN 81-50:2020 (D), clause 5.5

A revision of this type examination certificate is inevitable in case of changes or additions of the above-mentioned standards or changes of state of the art.

**Enclosure to the Type Examination Certificate  
No. UK-B 141 of 2022-02-21**

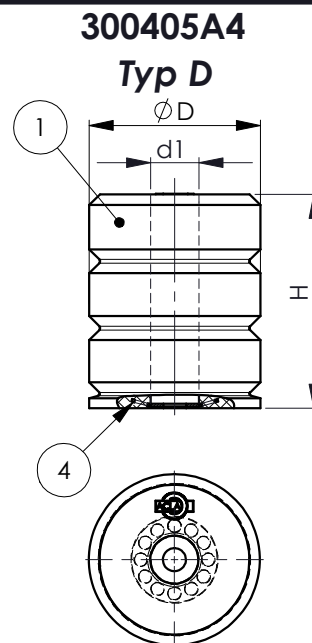
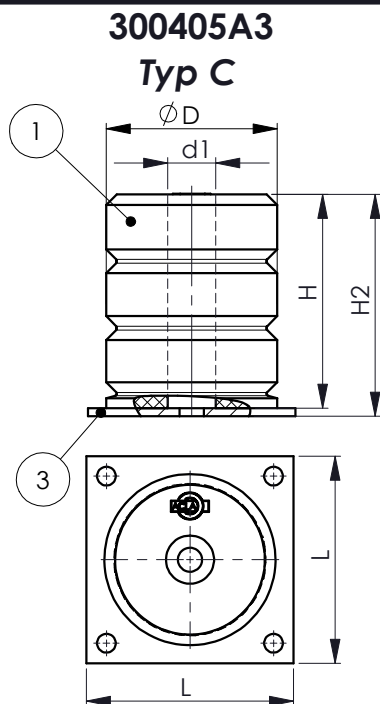
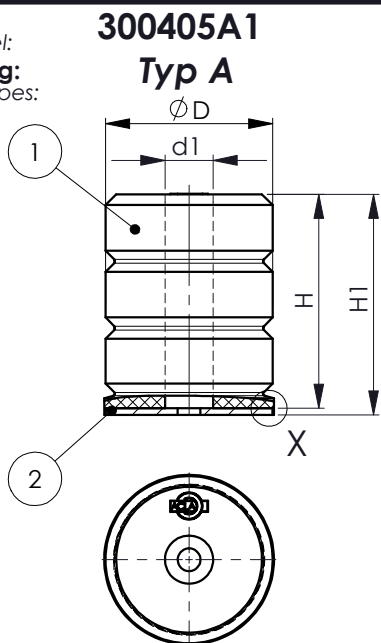


**Authorised Manufacturer of Serial Production – Production Sites (valid from: 2021-12-21):**

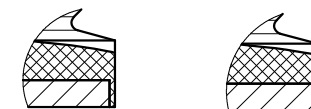
**Company**            ACLA-WERKE GMBH  
**Address**            Frankfurter Str. 142-190  
                             51065 Köln - Germany

- END OF DOCUMENT -

**Puffertyp:**  
Buffer model:  
**Befestigung:**  
Mounting types:



**DETAIL X**  
Fertigungsart  
production type



**Plattenkante**  
Plate edge

umschäumt  
Angabe "V1"  
foams around  
specification "V1"

sichtbar  
keine Angabe  
visible  
not specified

24.01.2022

**GEPRÜFT / APPROVED**  
**TÜV SÜD Industrie Service GmbH**  
Prüfstelle Fördertechnik / Test Laboratory LCC  
Westendstr. 199, 80686 München – Germany  
Sachverständiger (m/w/d) / Expert

**Kennzeichnungen auf dem Puffer:**

Die Kennzeichnungen können auf dem ganzen Umfang des Puffers angeordnet sein.  
Die Kennzeichnung besteht aus den Kennzeichnungsfeldern.  
(XXX Platzhalter ohne genaue Anzahl der Zeichen)  
Zusätzlich zu den beschriebenen können weitere Kennzeichnungen angebracht sein,  
zum Beispiel weitere Konformitätskennzeichnungen oder 2D-Codes.

**Markings on the buffer:**

The markings can be placed on the entire circumference of the buffer.  
The marking consists of the marking fields.  
(XXX placeholder without exact number of characters).  
In addition to those described, further markings may be added,  
for example further conformity markings or 2D codes

Puffertyp -----	300XXXXX	----- Buffer model
Datum -----	DD.MM.YYYY	----- Date
Uhrzeit / Fertigungsart --	hh:mm:ss / V1	-- Time / Model of manufacturing
Hersteller -----	ACLA	----- Manufacturer
Anschrift -----	DE 51065 KOELN	----- Address



**Abmessungen in mm**

Dimensions in mm

ØD	101
ød1	36
H	163
H1	168
H2	169
L	130

**UK-Baumusterprüfung:**

UKCA-Konformitätskennzeichen  
Nr. der zugelassene Stelle  
für die Qualitätssicherung  
Zertifikatsnummer

**UK type-examination:**

UKCA conformity mark  
No. of the approved body  
for quality assurance  
Certificate number

UK  
CA XXXX / UK-B XXX

Index	Teil	Änderungs-Mitteilung	Datum	Name	Stück	Benennung	Teil	Werkstoff
	1				4	Lochblech / perforated sheet		St.
	1				3	Platte / plate		St.
	1				2	Scheibe / disc		St.
	1				1	Puffer / Buffer		AUTAN HE

2021	Tag	Name	300405A	<b>ACLA-WERKE GMBH</b> Frankfurter Str.142-190 51065 Köln
Gez.	16.12.	Kremin		
Gepr.	ÜBERPRÜFT Ver. Schwab, Michael, 09.23.22.12.2021			
Norm				
Maßstab	-:-			CAD - Zeichnung 2020  <b>Z30012</b>
Maße ohne Toleranzangabe nach:	<b>Identifikations-Zeichnung</b> Identification drawing			
				Entstanden aus:
				Ersetzt durch: