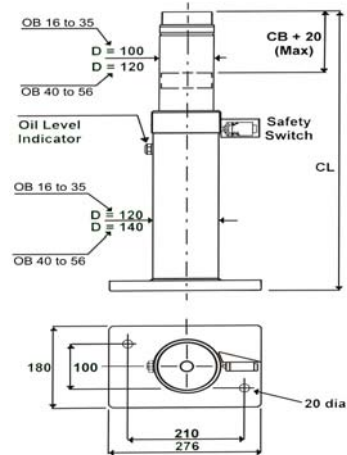




## RANGE OF OIL HYDRAULIC BUFFERS

**ELEVATOR  
EQUIPMENT  
LIMITED**

EN 81 Tested Range up to 4 m/s Contract Speed  
EC type Examination Certificate conforming to EC Directive 95/16/EC



**OB16L, OB16, OB18, OB20, OB23 and OB25 are delivered already filled with oil**

**COMES OIL FILLED AS STANDARD**

\* Type conforms to EN81

**OB16L, OB16 ~ OB18 ~ OB20 OB25 ~ OB29 ~ OB31 OB35 ~ OB40**

PART NUMBER	TYPE	MAXIMUM IMPACT SPEED (m/s)	STROKE (CB) (mm)	HEIGHT (CL) uncompressed (mm)	VOLUME OF OIL (LN) (litres)	WEIGHT (Kg)	K+Q+T Min (Kg)	K+Q+T Max (Kg)	PRICE
04-04-OB16L-100	OB16L	1.60 *	180	530	1.0	15	400	2500	£
04-04-OB16-184	OB16	1.84 *	175	625	1.7	29	700	5300	£
04-04-OB18-208	OB18	2.08 *	230	765	2.1	32			£
04-04-OB20-234	OB20	2.34 *	290	915	2.6	36			£
04-04-OB23-260	OB23	2.60 #	350	1080	3.1	40			P.O.A
04-04-OB25-288	OB25	2.88 *	435	1300	3.7	45			£
04-04-OB29-325	OB29	3.25 *	550	1595	4.6	52	1300		P.O.A
04-04-OB31-362	OB31	3.62 *	680	1920	5.6	60			P.O.A
04-04-OB35-409	OB35	4.09 *	860	2365	7.1	71			P.O.A
04-04-OB40-460	OB40	4.60 *	1112	3000	11.7	115			P.O.A
04-04-OB45-520	OB45	5.20 #	1390	3692	14.6	140			P.O.A
04-04-OB50-575	OB50	5.75 #	1740	4540	17.7	166		P.O.A	
04-04-OB56-650	OB56	6.50 #	2170	5615	22.8	208		P.O.A	

**F  
R  
E  
E  
  
C  
A  
R  
R  
I  
A  
G  
E**

(S.T.C)

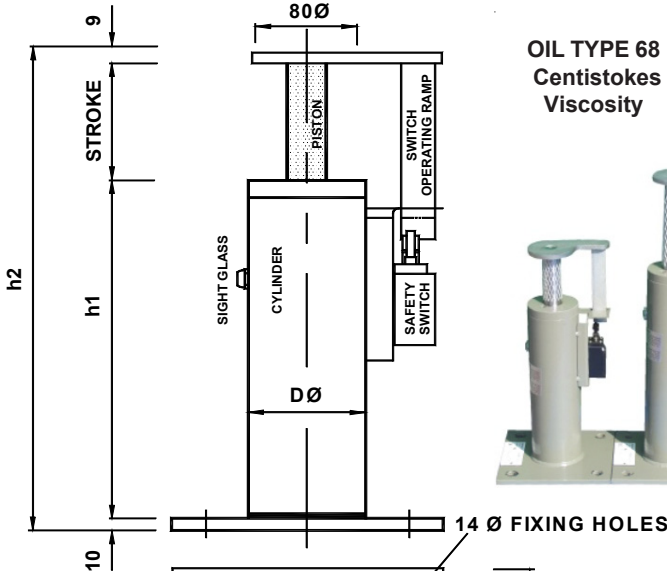
**TEL: 0116 266 2241**

E-Mail: [sales@elevatorequipment.co.uk](mailto:sales@elevatorequipment.co.uk)

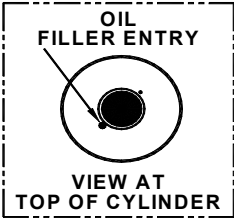


**FAX: 0116 266 2242**

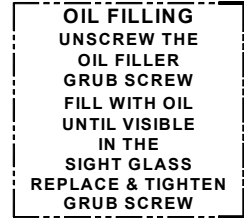
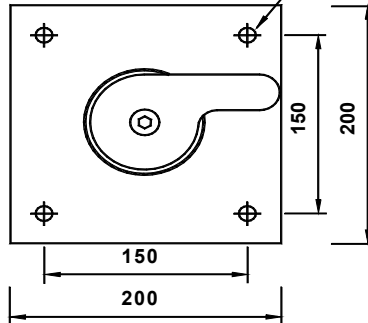
[www.elevatorequipment.co.uk](http://www.elevatorequipment.co.uk)



**OIL TYPE 68  
Centistokes  
Viscosity**



**WHEN FILLING IT IS RECOMMENDED THAT THE PISTON IS KEPT DEPRESSED TO AVOID AIR LOCKS**



**SUPPLIED WITHOUT OIL**

TYPE	h1 mm	h2 mm	D mm	STROKE mm	OIL CAP ltrs	MIN LOAD Kg	MAX LOAD Kg	MIN SPEED m/s	MAX SPEED m/s	NETT WEIGHT Kg	PARTNUMBER
A101	295	400	90	95	1	300	1000	0.63	1.00	15	04-05-CEA-A101
A102	360	550	90	160	1	300	1000	1.00	1.50	16	04-05-CEA-A102
A103	510	810	100	280	1.5	300	1000	1.50	2.00	22	04-05-CEA-A103
A201	295	405	100	95	1.5	1000	2000	0.63	1.00	17	04-05-CEA-A201
A202	375	555	100	160	1.5	1000	2000	1.00	1.50	20	04-05-CEA-A202
A203	520	815	110	280	2	1000	2000	1.50	2.00	27	04-05-CEA-A203
A301	295	410	110	95	2	2000	3000	0.63	1.00	20	04-05-CEA-A301
A302	395	560	110	160	2.5	2000	3000	1.00	1.50	22	04-05-CEA-A302
A303	520	820	120	280	3	2000	3000	1.50	2.00	30	04-05-CEA-A303

**PRICES AVAILABLE ON REQUEST**





**EN 81 Tested  
up to 1.00 m/s Contract Speed  
EC type Examination Certificate  
conforming to EC Directive 95/16/EC**

**MADE OF DIEPOCELL  
(Cellular Polyurethan-Elastomer)**



**TYPE: E4  
PRICE:**

**125 Diameter x 200 high  
Minimum Load: 175 daN  
Maximum Load 3000 daN  
Maximum Speed 1.00 m/s**



**TYPE: E5  
PRICE:**

**140 Diameter x 100 high  
Minimum Load: 710 daN  
Maximum Load 3600 daN  
Maximum Speed 0.75 m/s**

**F  
R  
E  
E  
  
C  
A  
R  
R  
I  
A  
G  
E**

(S.T.C)

**TEL: 0116 266 2241**  
E-Mail: [sales@elevatorequipment.co.uk](mailto:sales@elevatorequipment.co.uk)



**FAX: 0116 266 2242**  
[www.elevatorequipment.co.uk](http://www.elevatorequipment.co.uk)